

## **Biology PPE Revision tasks**

### **Revision Schedule**

PPE1 Revision Task 1 – w/b Monday 1<sup>st</sup> April: Cells and microscopy

**PPE1 Revision Task 2– w/b Monday 8<sup>th</sup> April: Circulatory System and exercise**

PPE1 Revision Task 3 – w/b Monday 23<sup>rd</sup> April: Communicable and non-communicable disease

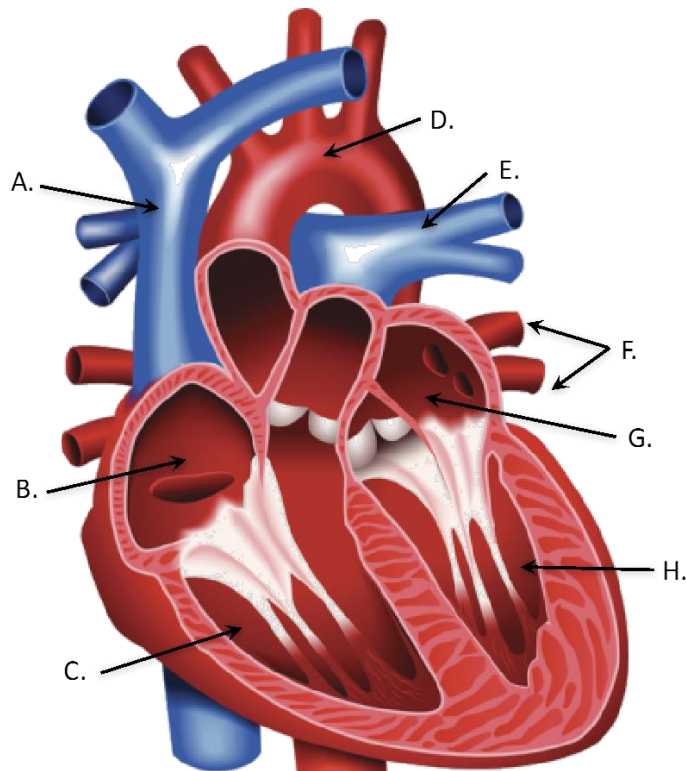
### **Resources**

Collins Revision Guide

BBC Bitesize - <https://www.bbc.com/bitesize/guides/zsnscrd/revision/1>

### **A. Animal tissues, organs and organ systems Part 2**

1. Name parts A - H of the heart from the diagram below:



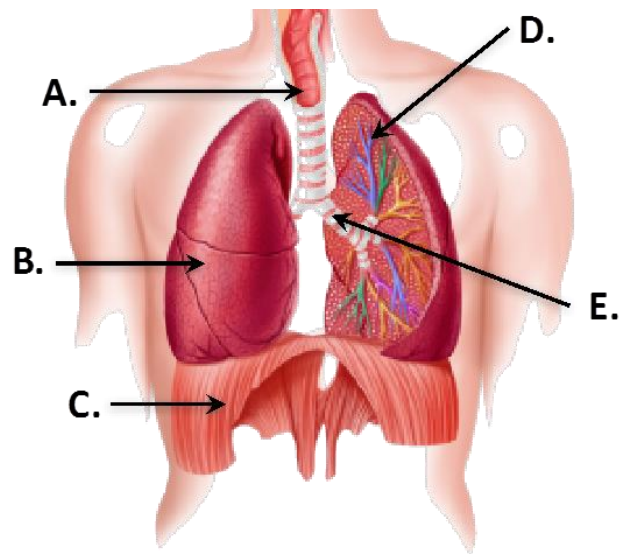
2. What is a double circulatory system?

3. What is a pacemaker?

4. What is the role of the coronary arteries?

5. Where does the left atrium pump blood to?

6. Name parts A - E of the lung from the diagram:



7. Where does gas exchange take place in the lungs?

8. Name the gas that moves from the blood into the lungs.

9. Name the blood vessels that carry blood away from the heart.

10. Which blood vessels are only one cell thick?

11. Which blood vessels have thick muscular walls?

12. Which blood vessels have valves?

13. What is plasma?
14. What is the role of a red blood cell?
15. What effect does exercise have on breathing and heart rate?
16. Why is more oxygen needed when exercising? (You must use the term 'respiration' in your answer).
17. What is coronary heart disease?
18. What are the risk factors for coronary heart disease?
19. What is a stent?
20. What are statins?
21. What is the role of heart valves?
22. Give two faults that can occur with heart valves.
23. What treatment can be given to a person with faulty heart valves?
24. Name three conditions that can lead to heart failure.